

Original Article

Open Access

The Effect of Hospital Case Volume on Clinical Outcomes in Patients with Nasopharyngeal Carcinoma: A Multi-institutional Retrospective Analysis (KROG-1106)

Boram Ha, MD¹
Kwan Ho Cho, MD¹
Sung Ho Moon, MD¹
Chang-Geol Lee, MD²
Ki Chang Keum, MD²
Yeon-Sil Kim, MD³
Hong-Gyun Wu, MD⁴
Jin Ho Kim, MD⁴
Yong Chan Ahn, MD⁵
Dongryul Oh, MD⁵
Jae Myoung Noh, MD⁵
Jong Hoon Lee, MD⁶
Sung Hwan Kim, MD⁶
Won Taek Kim, MD⁷
Young-Taek Oh, MD⁸
Min Kyu Kang, MD⁹
Jin Hee Kim, MD¹⁰
Ji-Yoon Kim, MD¹¹
Moon-June Cho, MD¹²
Chul Seoung Kay, MD¹³
Jin Hwa Choi, MD¹⁴

*A list author's affiliations appears at the end of the paper.

Purpose

The purpose of this study was to investigate the effect of hospital case volume on clinical outcomes in patients with nasopharyngeal carcinoma (NPC).

Materials and Methods

Data on 1,073 patients with cT1-4N0-3M0 NPC were collected from a multi-institutional retrospective database (KROG 11-06). All patients received definitive radiotherapy (RT) either with three-dimensional-conformal RT (3D-CRT) (n=576) or intensity-modulated RT (IMRT) (n=497). The patients were divided into two groups treated at high volume institution (HVI) (n=750) and low volume institution (LVI) (n=323), defined as patient volume ≥ 10 (median, 13; range, 10 to 18) and < 10 patients per year (median, 3; range, 2 to 6), respectively. End-points were overall survival (OS) and loco-regional progression-free survival (LRPFS).

Results

At a median follow-up of 56.7 months, the outcomes were significantly better in those treated at HVI than at LVI. For the 614 patients of propensity score-matched cohort, 5-year OS and LRPFS were consistently higher in the HVI group than in the LVI group (OS: 78.4% vs. 62.7%, $p < 0.001$; LRPFS: 86.2% vs. 65.8%, $p < 0.001$, respectively). According to RT modality, significant difference in 5-year OS was observed in patients receiving 3D-CRT (78.7% for HVI vs. 58.9% for LVI, $p < 0.001$) and not in those receiving IMRT (77.3% for HVI vs. 75.5% for LVI, $p=0.170$).

Conclusion

A significant relationship was observed between HVI and LVI for the clinical outcomes of patients with NPC. However, the difference in outcome becomes insignificant in the IMRT era, probably due to the standardization of practice by education.

Key words

Nasopharyngeal neoplasms, Hospital, Low- or high-volume, Treatment outcome, Three-dimensional conformal radiotherapy, Intensity-modulated radiotherapy

Correspondence: Kwan Ho Cho, MD
 Proton Therapy Center, National Cancer Center,
 323 Ilsan-ro, Ilsandong-gu, Goyang 10408, Korea
 Tel: 82-31-920-1720
 Fax: 82-31-920-0149
 E-mail: kwanch@ncc.re.kr

Received June 6, 2017

Accepted February 4, 2018

Published Online February 5, 2018

*Presented as an oral presentation at the 2016 Annual Meeting of the Korean Society for Radiation Oncology, October 14, 2016, Seoul, Korea.

Introduction

Surgeon expertise has a great impact on the treatment outcome of cancer surgery, and on surgical morbidity [1-3]; the expertise of the radiation oncologist presumably has the same impact on outcome and morbidity in radiotherapy (RT), but this has not been well documented. To practice “state of the art” RT, a radiation oncologist should have knowledge of the natural history of the disease, proper incorporation of multimodal images, and cross-sectional anatomy; they should also be able to precisely delineate target volume, develop an optimal treatment plan with an adequate dose to the target volume, avoid critical organs, and accurately deliver the daily treatment. RT with insufficient target coverage and an excessive dose to critical organs can result in lower loco-regional control, a higher incidence of late toxicity, and poorer survival outcome. Therefore, substantial knowledge and experience are required to provide high quality RT. Differences in the knowledge and experience among providers can make a difference in the outcome of RT [4-6] in patients with head and neck cancer, particularly in the era of three-dimensional-conformal RT (3D-CRT) or intensity-modulated RT (IMRT). However, there is substantial heterogeneity in target volume delineation and clinical practice among radiation oncologists [5], depending on their experience and knowledge. Therefore, we postulated that the experience of a radiation oncologist, as indexed by hospital case volume (HCV), might have an impact on treatment outcome in patients with nasopharyngeal cancer (NPC).

NPC arises from anatomically challenging region, but is highly radio-curable disease, which makes RT with or without chemotherapy the mainstay of treatment [7]. Thus, NPC might be a good candidate disease to evaluate the impact of radiation oncologists’ experience on treatment outcome. We retrospectively investigated the effect of HCV on overall survival (OS) and loco-regional progression-free survival (LRPFS) in patients with NPC enrolled in a retrospective multi-center trial (Korean Radiation Oncology Group [KROG] 11-06).

Materials and Methods

1. Data source and study population

We collected the data of patients with cT1-4N0-3M0 NPC from a NPC study database (KROG 11-06). KROG 11-06 was a retrospective multi-center trial which included 14 institu-

tions that reviewed the NPC pattern of care and treatment outcomes in patients with primary NPC treated from September 1988 to October 2011 [8]. The inclusion criteria were histologically confirmed NPC, cT1-4N0-3M0 disease according to the seventh editions of Union for International Cancer Control/ American Joint Committee on Cancer (UICC/ AJCC) staging classification. At the time of data collection, patients who had no baseline clinical information or had never completed RT were excluded from data collection. All patients on the data base were included for this analysis. Computational tomography was routinely done in all institutions for staging assessment. Magnetic resonance image (MRI) or positron emission tomography (PET) was also used for staging in some institutions.

After excluding patients treated with two-dimensional (2D) RT, 1,073 patients were analyzed. All patients received definitive RT either with 3D-CRT (n=576) or IMRT (n=497). The mean (\pm standard deviation [SD]) total 3D-CRT dose was 67.99 \pm 2.64 Gy in 38.0 \pm 2.8 fractions with a median fraction size of 1.80 Gy (range, 1.50 to 2.40 Gy). The mean \pm SD total dose for IMRT was 69.49 \pm 3.18 Gy in 31.8 \pm 3.4 fractions with a median fraction size of 2.25 Gy (range, 1.8 to 3.0 Gy), reflecting use of the concomitant boost technique.

2. Primary endpoint and covariates

To investigate associations between treatment outcome and institutional volume, the institutions were divided into high volume institutions (HVI) and low volume institutions (LVI) (S1 Table). The number of patients treated per year was calculated by dividing the total number of patients by the total period over which the patients were treated at each institution and it ranged from 2 to 18. HVI was defined as patient volume \geq 10 patients per year (median, 13; range, 10 to 18) and LVI as patient volume < 10 patients per year (median, 3; range, 2 to 6). Ten patients per year was chosen as cut-point because there was the largest gap between the two consecutive values of 10 and 6. A total of 750 patients were treated at 4 HVIs and 323 were treated at 10 LVIs.

The endpoints of this study were OS and LRPFS, which were defined as the time from the start of RT to the time of death from any cause (OS), and persistence or recurrence in the nasopharynx or neck (LRPFS). Patients who had lost to follow-up were censored at the time of their last follow-up. The variables analyzed were age, Eastern Cooperative Oncology Group (ECOG) performance status (PS), World Health Organization (WHO) histologic type, TN category, stage grouping, the utilization of MRI or PET for staging, concurrent chemo-radiotherapy (CCRT; yes or no), RT modality (3D or IMRT), and institutional case volume (HVI or LVI).

3. Statistical analysis

Baseline characteristics of the patients treated at HVI and LVI were compared with the t test for continuous variables and the chi-square test for categorical variables. The Kaplan-Meier method was used to assess event-time distributions and the log-rank test was used to compare the event-time distributions between the two groups. In both the univariate and multivariate analyses, a $p < 0.05$ was considered signif-

icant. A Cox proportional hazard model was used with stepwise backward linear regression, where only variables whose p-values were > 0.10 were removed and used in multivariate analyses. Since there was significant imbalance in patient characteristics between HVI and LVI, propensity score matching analysis was done to reduce bias due to confounding variables. The propensity score was estimated using a logistic regression model including variables of age, ECOG PS, WHO histologic classification, TN category, stage group,

Table 1. Patient characteristics before propensity score matching

Characteristic	HVI (n=750)	LVI (n=323)	Total (n=1,073)	p-value
Age, median (range, yr)	49.8 (16-86)	52.8 (18-77)	50.5 (16-86)	< 0.001
Sex				
Female	197 (26.3)	103 (31.9)	300 (28.0)	0.060
Male	553 (73.7)	220 (68.1)	773 (72.0)	
ECOG PS				
0-1	717 (95.6)	308 (95.4)	1,025 (95.5)	0.859
2	33 (4.4)	15 (4.6)	48 (4.5)	
WHO histologic classification				
I	111 (14.8)	51 (15.8)	162 (15.1)	< 0.001
II	258 (34.4)	65 (20.1)	323 (30.1)	
III	343 (45.7)	191 (59.1)	534 (49.8)	
Unknown	38 (5.1)	16 (5.0)	54 (5.0)	
T category				
1-2	435 (58.0)	170 (52.6)	605 (56.4)	0.104
3-4	315 (42.0)	153 (47.4)	468 (43.6)	
N category				
0-1	315 (42.0)	155 (48.0)	470 (43.8)	0.070
2-3	435 (58.0)	168 (52.0)	603 (56.2)	
Stage group				
I-II	179 (23.9)	89 (27.6)	268 (25.0)	0.201
III-IV	571 (76.1)	234 (72.4)	805 (75.0)	
MRI				
Not done	240 (32.2)	220 (69.4)	460 (43.3)	
Done	506 (67.8)	97 (30.6)	603 (56.7)	< 0.001
PET				
Not done	410 (55.0)	250 (79.1)	660 (62.1)	
Done	336 (45.0)	66 (20.9)	402 (37.9)	< 0.001
Radiotherapy				
3D-CRT	359 (47.9)	217 (67.2)	576 (53.7)	< 0.001
IMRT	391 (52.1)	106 (32.8)	497 (46.3)	
CCRT				
No	183 (24.4)	77 (23.8)	260 (24.2)	0.844
Yes	567 (75.6)	246 (76.2)	813 (75.8)	

Values are presented as number (%). HVI, high volume institutions; LVI, low volume institutions; ECOG PS, Eastern Cooperative Oncology Group performance status; WHO, World Health Organization; MRI, magnetic resonance image; PET, positron emission tomography; 3D-CRT, three-dimensional-conformal radiotherapy; IMRT, intensity-modulated radiotherapy; CCRT, concurrent chemo-radiotherapy.

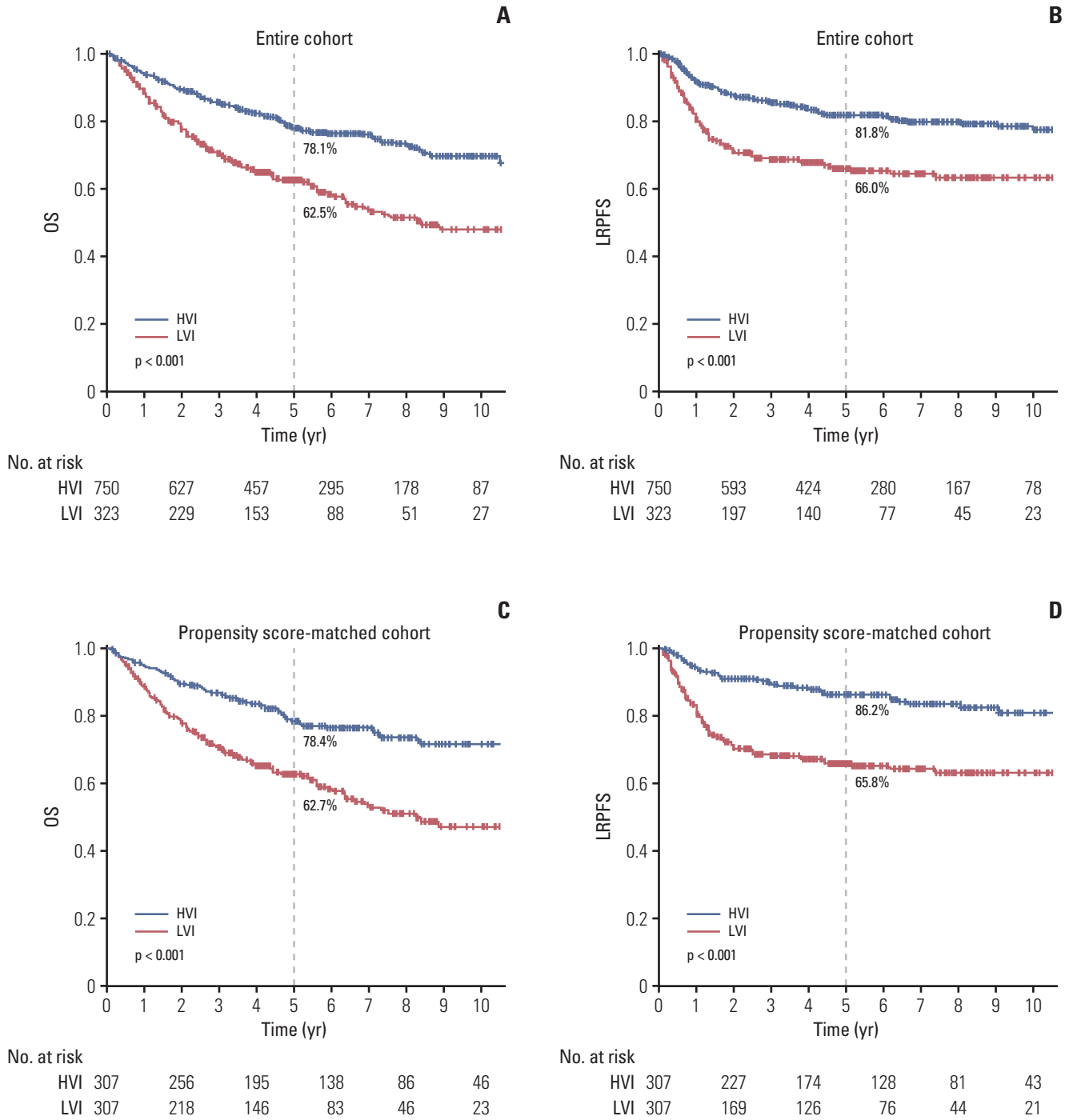


Fig. 1. Kaplan-Meier survival curves of overall survival (OS) (A) and loco-regional progression-free survival (LRPFS) (B) for both groups in entire cohort and propensity score-matched cohort. The OS (C) and LRPFS (D) were significantly higher in high volume institutions (HVI) than in low volume institutions (LVI) for the cohort before and after propensity score matching.

Table 2. Multivariate analysis of the prognostic variables for predicting OS and LRPFS

Characteristic	No. of patients	OS			LRPFS		
		HR	95% CI	p-value	HR	95% CI	p-value
Age (yr)							
< 50	492	1.00	-	< 0.001	1.00	-	0.123
≥ 50	581	1.88	1.47-2.40		1.24	0.94-1.64	
ECOG PS							
0-1	1,025	1.00	-	0.001	1.00	-	0.044
2	48	2.16	1.46-3.21		1.73	1.02-2.93	
WHO histologic classification							
I	162	1.00	-	< 0.001	1.00	-	0.002
II	323	0.57	0.41-0.79		0.54	0.37-0.79	
III	534	0.81	0.47-1.40		0.52	0.37-0.74	
Unknown	54	-	-		0.82	0.45-1.52	
T category							
1-2	605	1.00	-	< 0.001	1.00	-	< 0.001
3-4	468	1.72	1.29-2.30		1.78	1.35-2.34	
N category							
0-1	470	1.00	-	0.015	1.00	-	0.304
2-3	603	1.46	1.08-1.97		1.21	0.84-1.75	
Stage group							
I-II	268	1.00	-	0.060	1.00	-	0.658
III-IV	805	1.61	0.98-2.63		1.13	0.66-1.95	
MRI							
Not done	460	1.00	-	0.267	1.00	-	0.840
Done	603	1.17	0.89-1.55		1.04	0.74-1.45	
PET							
Not done	660	1.00	-	0.111	1.00	-	0.307
Done	402	0.79	0.59-1.06		0.84	0.60-1.18	
Radiotherapy							
3D-CRT	576	1.00	-	0.218	1.00	-	0.959
IMRT	497	0.85	0.66-1.10		0.99	0.74-1.33	
HCV							
HVI	750	1.00	-	< 0.001	1.00	-	< 0.001
LVI	323	2.03	1.60-2.57		2.14	1.63-2.80	

OS, overall survival; LRPFS, loco-regional progression-free survival; HR, hazard ratio; CI, confidence interval; ECOG PS, Eastern Cooperative Oncology Group performance status; WHO, World Health Organization; MRI, magnetic resonance image; PET, positron emission tomography; 3D-CRT, three-dimensional-conformal radiotherapy; IMRT, intensity-modulated radiotherapy; HCV, hospital case volume; HVI, high volume institutions; LVI, low volume institutions.

RT modality (3D or IMRT) and concurrent chemotherapy (yes or no).

4. Ethical statement

KROG 11-06 was approved by the institutional review boards of each participating hospital and performed in accordance with the principles of the Declaration of Helsinki. The informed consent was waived.

Results

1. Patient characteristics and survival of the cohort before propensity score matching

The patient and treatment characteristics stratified by HVI and LVI are summarized in Table 1. The median follow-up time was 56.7 months (range, 0 to 244 months). Median age

Table 3. Patient characteristics after propensity score matching

Characteristic	HVI (n=307)	LVI (n=307)	Total (n=614)	p-value
Age, median (range, yr)	52 (16-76)	53 (18-77)	53 (16-77)	0.199
Sex				
Female	78 (25.4)	100 (32.6)	178 (29.0)	0.062
Male	229 (74.6)	207 (67.4)	436 (71.0)	
ECOG PS				
0-1	296 (96.4)	292 (95.1)	588 (95.8)	0.549
2	11 (3.6)	15 (4.9)	26 (4.2)	
WHO histologic classification				
I	39 (12.7)	48 (15.6)	87 (14.2)	0.785
II	68 (22.1)	65 (21.2)	133 (21.7)	
III	187 (60.9)	180 (58.6)	367 (59.8)	
Unknown	13 (4.2)	14 (4.6)	27 (4.4)	
T category				
1-2	160 (52.1)	170 (55.4)	330 (53.7)	0.466
3-4	147 (47.9)	137 (44.6)	284 (46.3)	
N category				
0-1	134 (43.6)	142 (46.3)	276 (45.0)	0.570
2-3	173 (56.4)	165 (53.7)	338 (55.0)	
Stage group				
I-II	74 (24.1)	89 (29.0)	163 (26.5)	0.201
III-IV	233 (75.9)	218 (71.0)	451 (73.5)	
Radiotherapy				
3D-CRT	204 (66.4)	201 (65.5)	405 (66.0)	0.865
IMRT	103 (33.6)	106 (34.5)	209 (34.0)	
CCRT				
No	73 (23.8)	75 (24.4)	148 (24.1)	0.925
Yes	234 (76.2)	232 (75.6)	466 (75.9)	

Values are presented as number (%). HVI, high volume institutions; LVI, low volume institutions; ECOG PS, Eastern Cooperative Oncology Group performance status; WHO, World Health Organization; 3D-CRT, three-dimensional-conformal radiotherapy; IMRT, intensity-modulated radiotherapy; CCRT, concurrent chemo-radiotherapy.

was older in patients treated at HVI versus LVI. A lower proportion of patients treated at HVI had WHO histologic grade III tumors (45.7% vs. 59.1%, $p < 0.001$). MRI and PET were more frequently used for staging in patients treated at HVI than at LVI (MRI, 67.8% vs. 30.6%, $p < 0.001$; PET, 45.0% vs. 20.9%, $p < 0.001$, respectively). HVI were more likely to treat patients with IMRT than 3D-CRT (52.1% vs. 32.8%, $p < 0.001$). A total of 304 patients died. Fig. 1 shows the Kaplan-Meier survival curves for both groups. The OS was significantly higher in HVI than LVI for the cohort before propensity score matching (5-year, 78.1% vs. 62.5%; 10-year, 69.7% vs. 47.9%; $p < 0.001$). HVI was associated with higher OS compared with LVI in the multivariate Cox regression model (hazard ratio [HR], 0.48; 95% confidence interval [CI], 0.38 to 0.61; $p < 0.001$) (Table 2). Other variables significantly associated with OS were age, PS, WHO histologic classifica-

tion, and TN category.

HVI was associated with significantly longer LRPFS compared to that of LVI (5-year, 81.8% vs. 66.0%; 10-year, 77.5% vs. 63.3%; $p < 0.001$) (Fig. 1). This survival benefit at HVI was also seen in the multivariate analysis (HR, 0.45; 95% CI, 0.34 to 0.59; $p < 0.001$) (Table 2).

2. Patient characteristics and survival of the cohort after propensity score matching

A propensity score matching analysis was performed to reduce bias due to confounding variables. Of the patients treated at LVI, 307 were matched with 307 patients treated at HVI. Table 3 shows the patients characteristics for the propensity score-matched cohort. Variables including age, WHO histologic classification, and RT modality (3D-CRT vs.

Table 4. Multivariate analysis of the prognostic variables for predicting OS and LRPFS in the propensity score-matched cohort

Characteristic	No. of patients	OS			LRPFS		
		HR	95% CI	p-value	HR	95% CI	p-value
Age (yr)							
< 50	241	1.00	-	< 0.001	1.00	-	0.060
≥ 50	373	1.85	1.31-2.59		1.44	0.99-2.11	
ECOG PS							
0-1	588	1.00	-	0.007	1.00	-	0.117
2	26	2.10	1.22-3.61		1.78	0.87-3.66	
WHO histologic classification							
I	87	1.00	-	0.036	1.00	-	0.105
II	133	0.51	0.30-0.85		0.61	0.32-1.15	
III	367	0.51	0.33-0.79		0.53	0.30-0.91	
Unknown	27	0.63	0.29-1.35		0.86	0.37-2.00	
T category							
1-2	330	1.00	-	0.088	1.00	-	< 0.001
3-4	284	1.36	0.96-1.95		1.99	1.38-2.87	
N category							
0-1	276	1.00	-	0.257	1.00	-	0.412
2-3	338	1.28	0.84-1.95		1.24	0.74-2.08	
Stage group							
I-II	163	1.00	-	< 0.001	1.00	-	0.716
III-IV	451	2.77	1.65-4.65		1.15	0.54-2.43	
Radiotherapy							
3D-CRT	409	1.00	-	0.292	1.00	-	0.777
IMRT	209	0.82	0.57-1.19		0.94	0.62-1.43	
HCV							
HVI	307	1.00	-	< 0.001	1.00	-	< 0.001
LVI	307	2.36	1.72-3.25		2.99	2.03-4.42	

OS, overall survival; LRPFS, loco-regional progression-free survival; HR, hazard ratio; CI, confidence interval; ECOG PS, Eastern Cooperative Oncology Group performance status; WHO, World Health Organization; 3D-CRT, three-dimensional-conformal radiotherapy; IMRT, intensity-modulated radiotherapy; HCV, hospital case volume; HVI, high volume institutions; LVI, low volume institutions.

IMRT) were well-balanced between the two groups after propensity score matching.

A total of 196 patients died at a median follow-up of 55 months. As shown in the Kaplan-Meier survival curves for both groups in the propensity score-matched cohort (Fig. 1), OS was significantly higher in HVI than LVI (5-year, 78.4% vs. 62.7%; 10-year, 71.6% vs. 47.0%; $p < 0.001$, respectively). The multivariate Cox regression revealed that HVI was associated with higher OS than LVI, with an estimated HR of 0.43 (95% CI, 0.32 to 0.57; $p < 0.001$). Other variables associated with OS in multivariate analysis were age, PS, WHO histologic classification, and stage group (Table 4).

As shown in Fig. 1, LRPFS was significantly higher in HVI than in LVI (5-year, 86.2% vs. 65.8%; 10-year, 80.9% vs. 63.0%;

$p < 0.001$). The LRPFS difference remained significant in favor of patients treated at HVI in the multivariate analysis (HR, 0.34; 95% CI, 0.23 to 0.49; $p < 0.001$). Other variable associated with LRPFS was T category (Table 4).

To determine the impact of RT modality, the propensity score-matched cohort was divided into 3D-CRT and IMRT groups. Significant differences in OS (5-year OS, 78.7% for HVI vs. 58.9% for LVI; $p < 0.001$) and LRPFS (5-year LRPFS, 83.6% for HVI vs. 67.1% for LVI; $p < 0.001$) were observed in the 3D-CRT group (Fig. 2). No differences in OS (5-year OS, 77.3% for HVI vs. 75.5% for LVI; $p=0.170$) or LRPFS (5-year LRPFS, 84.3% for HVI vs. 84.1% for LVI; $p=0.692$) were observed in the IMRT group (Fig. 2).

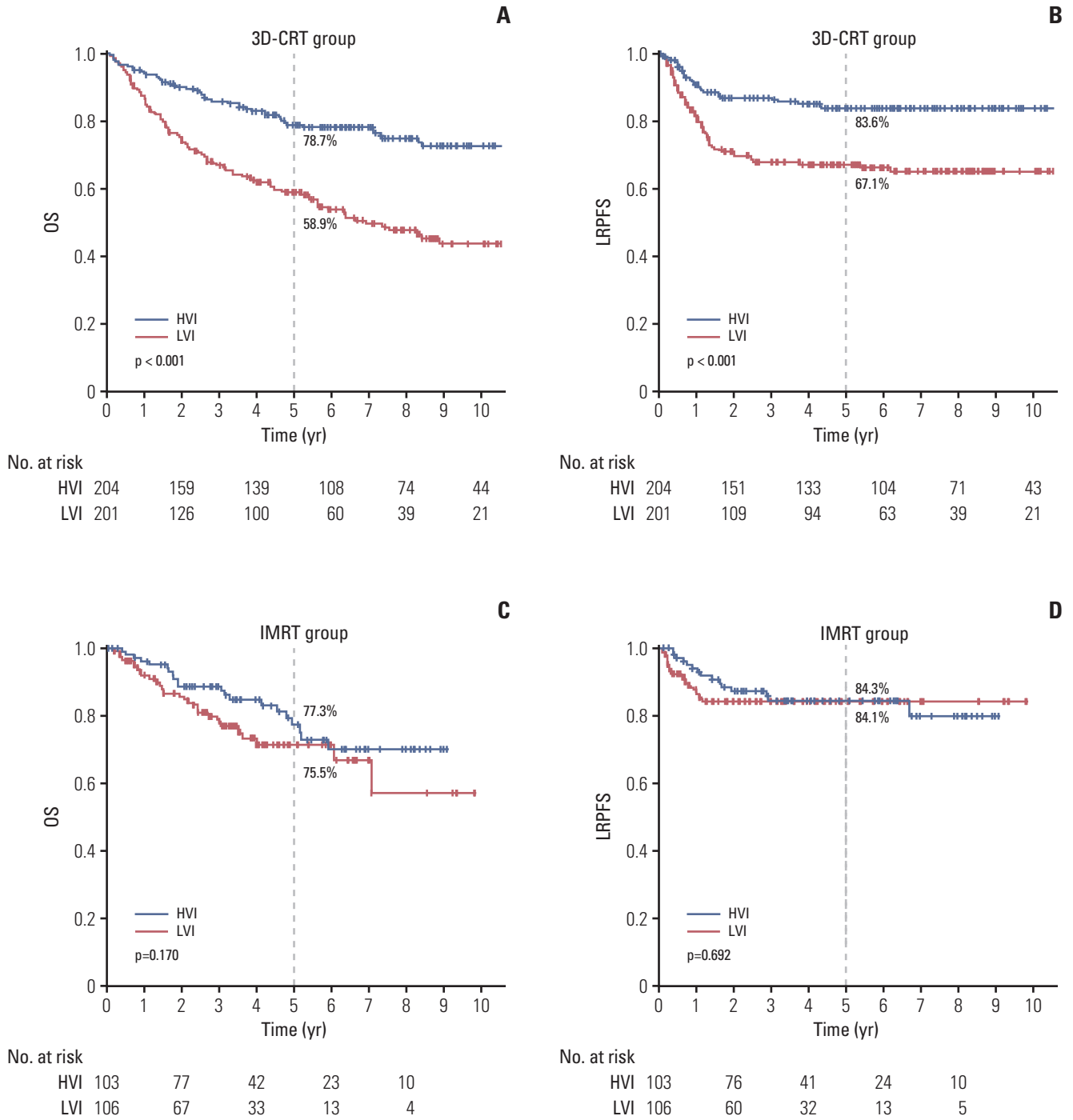


Fig. 2. Kaplan-Meier survival curves of overall survival (OS) (A, C) and loco-regional progression-free survival (LRPFS) (B, D) for both groups in the subgroups of patients treated with three-dimensional-radiotherapy (3D-CRT) and intensity-modulated radiotherapy (IMRT) in the propensity score-matched cohort. Significant differences in OS ($p < 0.001$) and LRPFS ($p < 0.001$) were observed in the 3D-CRT group and not in the IMRT group.

Table 5. Acute and late toxicities according to the HCV in the propensity score-matched cohort

	HVI (n=307)	LVI (n=307)	Total (n=714)	p-value
Acute toxicity				
Hematologic				
Grade 3	8 (2.6)	50 (16.3)	58 (9.5)	< 0.001 ^{a)}
Grade 4	0	11 (3.6)	11 (1.8)	
Grade 5	0	1 (0.3)	1 (0.2)	
Mucositis				
Grade 3	34 (11.1)	60 (20.0)	94 (15.3)	0.001 ^{a)}
Grade 4	0	5 (1.6)	5 (0.8)	
Xerostomia				
Grade 3	2 (0.7)	27 (8.8)	29 (4.7)	< 0.001 ^{b)}
Skin				
Grade 3	12 (3.9)	10 (3.3)	22 (3.6)	0.664 ^{b)}
Late toxicity ≥ grade 3				
Skin telangiectasia/Neck fibrosis	5 (1.6)	5 (1.6)	10 (1.6)	> 0.999 ^{b)}
Mucositis	11 (3.6)	8 (2.6)	19 (3.1)	0.484 ^{b)}
Bone necrosis	2 (0.7)	1 (0.3)	3 (0.5)	> 0.999 ^{a)}
Carotid artery stenosis/Rupture	2 (0.7)	1 (0.3)	3 (0.5)	> 0.999 ^{a)}
Brain necrosis/Myelopathy	4 (1.3)	4 (1.3)	8 (1.3)	> 0.999 ^{a)}
CN palsy/Brachial plexopathy	4 (1.3)	4 (1.3)	8 (1.3)	> 0.999 ^{a)}
Hearing difficulty/Labyrinthitis	2 (0.7)	4 (1.3)	6 (1.0)	0.686 ^{a)}
Dysphagia	3 (1.0)	1 (0.3)	4 (0.7)	0.624 ^{a)}
Xerostomia (at 2 years F/U)^{c)}				
Grade 2	30 (11.7)	17 (8.0)	47 (9.9)	0.126 ^{a)}
Grade 3	2 (0.8)	0	2 (0.4)	
Treatment related death	2 (0.7)	8 (2.6)	10 (1.6)	0.056 ^{b)}

Values are presented as number (%). HCV, hospital case volume; HVI, high volume institutions; LVI, low volume institutions; CN, cranial nerve; F/U, follow-up. ^{a)}By Fisher exact test, ^{b)}By chi square test, ^{c)}Xerostomia at 2 years F/U were assessed in a total of 474 patients (256 in HVI and 218 in LVI).

3. Toxicity

Acute grade ≥ 3 toxicities occurred less frequently in patients treated at HVI than those treated at LVI: hematologic toxicity (3.1% vs. 19.2%, $p < 0.001$), mucositis (18.4% vs. 22.0%, $p=0.003$), and xerostomia (0.9% vs. 9.0%, $p < 0.001$). Xerostomia ≥ grade 2 at 2 years after treatment was more frequently reported in patients treated at HVI than those treated at LVI (13.0% vs. 7.4%, $p=0.046$). However, this difference was not statistically significant in the propensity score-matched cohort (12.5% vs. 8.0%, $p=0.126$, respectively) (Table 5). Other late toxicities were reported in less than 3% of patients and the incidences were comparable between HVI and LVI. Two patients (0.3%) in HVI and eight patients (2.5%) in LVI died of treatment related toxicity.

Discussion

This study demonstrated a significant relationship between institutional volume and long-term outcomes of NPC. A higher institutional volume was associated with higher OS (HR, 2.09; 95% CI, 1.65 to 2.64; $p < 0.001$) and LRPFS (HR, 2.22; 95% CI, 1.69 to 2.91; $p < 0.001$). This difference remained significant after adjusting for covariates in the multivariate and propensity score matching analyses. These findings are consistent with other studies evaluating the volume effect in patients treated with definitive RT at diverse cancer sites, including high-risk prostate cancer, locally advanced lung cancer, and NPC [9-12].

Wuthrick et al. [13] performed a secondary analysis of the RTOG 0129 stage III-IV head and neck cancer RT trial, in which all patients received definitive RT with IMRT, and reported a greater risk of death in patients treated at histor-

ically low-volume accrual centers (HR, 1.91; 95% CI, 1.37 to 2.65). Boero et al. [14] published the results of a retrospective analysis of 6,212 patients with head and neck cancer using the SEER-Medicare database. They found a significant relationship between provider volume and survival only for patients receiving IMRT (HR, 0.79; 95% CI, 0.67 to 0.94), but not for patients receiving conventional non-IMRT [14]. However, it is difficult to compare these results with ours because the two studies included only a small proportion of NPC cases (0%-2%) and the latter study also enrolled 35% patients who underwent surgery prior to RT. Only one other study included patients with NPC; Lee et al. [12] retrospectively analyzed the Taiwan National Health Insurance Research Database data of 1,225 patients treated between 1998 and 2000. They found that patients treated by high-volume physicians had a 14% relative improvement in adjusted 10-year survival rate (high-volume vs. low/medium-volume physicians, 75% vs. 61%; $p < 0.001$). However, no information was given about the impact of RT modality on outcome.

Surprisingly, the analysis of the impact of RT modality on outcome showed that there was a significant relationship between institutional volume and survival only for patients receiving 3D-CRT (5-year OS, 78.7% for HVI vs. 58.9% for LVI; $p < 0.001$) and not for those receiving IMRT (5-year OS, 77.3% vs. 75.5%; $p = 0.170$). In contrast, Boero et al. [14] demonstrated a significant relationship between provider volume and survival only for patients receiving IMRT and not for those receiving conventional RT, including 2D- and 3D-CRT. The reason for this discrepancy is not clear but one potential explanation might be that IMRT was first introduced to Korea in 2001. Around this time, many guidelines were published to help target delineation in head and neck cancers. In addition, many educational sessions were provided by the Korean Society for Radiation Oncology to educate society members on how to contour targets and evaluate treatment plans, which was not available for 3D-CRT. These efforts may have had a standardizing effect on practice; thus, no differences were found in outcome between HVI and LVI, as a result of substantial improvement in LVI, approaching that of HVI in the IMRT era. Notably, the 5-year OS rates improved from 58.9% with 3D-CRT to 75.5% with IMRT in the LVI, whereas they were similar at 78.7% for 3D-CRT and 77.3% for IMRT in the HVI. Thus, the standardization of practice by education might have a role for improvement of outcome in LVI.

The experience of a radiation oncologist as indexed by HCV might be one explanation for the survival advantage in patient treated at a HVI, as shown here. RT is a primary treatment for NPC, and a loco-regional control rate $\geq 90\%$ can be achieved with contemporary IMRT techniques [7,15]. However, NPC treatment is complex. Several confounding factors influence the survival advantage in patients treated at a HVI.

The utilization of advanced imaging studies including MRI and PET scans are helpful for accurate staging and target delineation for RT planning, which might improve treatment outcome. In this study, MRI and PET were performed twice more frequently at HVI than at LVI which might influence the better outcome at HVI. In univariate analysis, the OS and LRPFS were significantly associated with the utilization of PET (yes vs. no) (5-year OS, 78.7% vs. 70.6%; $p = 0.012$; 5-year LRPFS, 82.0% vs. 74.5%; $p = 0.010$, respectively), whereas they were not associated with the utilization of MRI. In multivariate analysis, the utilization of PET, however, became insignificant. Concurrent chemotherapy is also crucial for locally-advanced NPC based on its survival benefit, as shown in multiple randomized-controlled trials and meta-analyses [16,17]. Given the complexity of the treatment for NPC, a multidisciplinary approach is recommended to improve long term survival and decrease long term toxicity. A HVI is likely to involve a multi-disciplinary team with more experienced radiologists, medical oncologists, radiation oncologists, and other supporting personnel, which might result in better outcomes. Acute toxicities $>$ grade 3 were more frequently reported in LVI and treatment related mortality was also higher in LVI, which could have attributed to lower survival outcome in LVI. However, their impact on survival outcome could not be investigated because of the retrospective nature of the study.

Some limitations of our study should be mentioned. First, the effect of non-RT factors was not fully controlled due to the inherent shortcomings of a retrospective study. Detailed information about the chemotherapy regimen, number of cycles, and use of neo-adjuvant vs. adjuvant chemotherapy were not available in all patients. Nevertheless, most patients were given CCRT (75%) and this proportion was well-balanced between HVI and LVI. Given the lack of the information about socioeconomic status, there was the possibility of selection, in which patients with a higher socioeconomic status and good overall health may have visited HVI and sought expert opinions, which might have influenced the outcome.

The current study also had strengths. First, we included a large cohort comprised only of patients with NPC. This homogeneity made it easier to specifically interpret the impact of HCV on NPC outcomes. Second, we used a database for this retrospective study (KROG 11-06), which contained data on all patients who met the inclusion criteria (cT1-4N0-3M0, previously untreated NPC), thus including nearly all patients treated at each institution. In contrast to a national insurance database, these data included detailed information about the clinical status and treatment of each patient.

Our results are unique because the HCV was more influential for patients receiving 3D-CRT than IMRT, which con-

tradicts previous studies [13,14]. More importantly, our data suggest that the difference in outcome between HVI and LVI can be overcome potentially by the standardization of practice.

A significant relationship was observed between HVI and LVI for the clinical outcomes of patients with NPC. However, the difference in outcome becomes insignificant in the IMRT era, probably due to the standardization of practice by education.

Electronic Supplementary Material

Supplementary materials are available at Cancer Research and Treatment website (<https://www.e-crt.org>).

Conflicts of Interest

Conflict of interest relevant to this article was not reported.

Acknowledgments

This work was supported by a National Cancer Center Grant (NCC-1610440) and the Korean Radiation Oncology Group 11-06.

Author Details

¹Proton Therapy Center, Research Institute and Hospital, National Cancer Center, Goyang, ²Department of Radiation Oncology, Yonsei University College of Medicine, Seoul, ³Department of Radiation Oncology, Seoul St. Mary's Hospital, College of Medicine, The Catholic University of Korea, Seoul, ⁴Department of Radiation Oncology, Seoul National University College of Medicine, Seoul, ⁵Department of Radiation Oncology, Samsung Medical Center, Sungkyunkwan University School of Medicine, Seoul, ⁶Department of Radiation Oncology, St. Vincent's Hospital, College of Medicine, The Catholic University of Korea, Suwon, ⁷Department of Radiation Oncology, Pusan National University Hospital, Busan, ⁸Department of Radiation Oncology, Ajou University School of Medicine, Suwon, ⁹Department of Radiation Oncology, School of Medicine, Kyungpook National University, Daegu, ¹⁰Department of Radiation Oncology, Dongsan Medical Center, Keimyung University School of Medicine, Daegu, ¹¹Department of Radiation Oncology, Yeouido St. Mary's Hospital, College of Medicine, The Catholic University of Korea, Seoul, ¹²Department of Radiation Oncology, Chungnam National University School of Medicine, Daejeon, ¹³Department of Radiation Oncology, Incheon St. Mary's Hospital, College of Medicine, The Catholic University of Korea, Incheon, ¹⁴Department of Radiation Oncology, Chung-Ang University Hospital, Seoul, Korea

References

- Birkmeyer JD, Siewers AE, Finlayson EV, Stukel TA, Lucas FL, Batista I, et al. Hospital volume and surgical mortality in the United States. *N Engl J Med.* 2002;346:1128-37.
- Gruen RL, Pitt V, Green S, Parkhill A, Campbell D, Jolley D. The effect of provider case volume on cancer mortality: systematic review and meta-analysis. *CA Cancer J Clin.* 2009;59:192-211.
- Schrag D, Panageas KS, Riedel E, Cramer LD, Guillem JG, Bach PB, et al. Hospital and surgeon procedure volume as predictors of outcome following rectal cancer resection. *Ann Surg.* 2002;236:583-92.
- Das IJ, Cheng CW, Chopra KL, Mitra RK, Srivastava SP, Glatstein E. Intensity-modulated radiation therapy dose prescription, recording, and delivery: patterns of variability among institutions and treatment planning systems. *J Natl Cancer Inst.* 2008;100:300-7.
- Hong TS, Tome WA, Harari PM. Heterogeneity in head and neck IMRT target design and clinical practice. *Radiation Oncol.* 2012;103:92-8.
- Nelms BE, Robinson G, Markham J, Velasco K, Boyd S, Narayan S, et al. Variation in external beam treatment plan quality: an inter-institutional study of planners and planning systems. *Pract Radiat Oncol.* 2012;2:296-305.
- Moon SH, Cho KH, Lee CG, Keum KC, Kim YS, Wu HG, et al. IMRT vs. 2D-radiotherapy or 3D-conformal radiotherapy of nasopharyngeal carcinoma: Survival outcome in a Korean multi-institutional retrospective study (KROG 11-06). *Strahlenther Onkol.* 2016;192:377-85.
- Sung SY, Kang MK, Kay CS, Keum KC, Kim SH, Kim YS, et al. Patterns of care for patients with nasopharyngeal carcinoma (KROG 11-06) in South Korea. *Radiat Oncol J.* 2015;33:188-97.
- Chen YW, Mahal BA, Muralidhar V, Nezoslosky M, Beard CJ, Den RB, et al. Association between treatment at a high-volume facility and improved survival for radiation-treated men with high-risk prostate cancer. *Int J Radiat Oncol Biol Phys.* 2016;94:683-90.
- Koshy M, Malik R, Mahmood U, Husain Z, Sher DJ. Stereotactic body radiotherapy and treatment at a high volume facility is associated with improved survival in patients with inoperable stage I non-small cell lung cancer. *Radiation Oncol.* 2015;114:148-54.
- Wang EH, Rutter CE, Corso CD, Decker RH, Wilson LD, Kim AW, et al. Patients selected for definitive concurrent chemoradiation at high-volume facilities achieve improved survival in stage III non-small-cell lung cancer. *J Thorac Oncol.* 2015;10:

- 937-43.
12. Lee CC, Huang TT, Lee MS, Su YC, Chou P, Hsiao SH, et al. Survival rate in nasopharyngeal carcinoma improved by high caseload volume: a nationwide population-based study in Taiwan. *Radiat Oncol*. 2011;6:92.
 13. Wuthrick EJ, Zhang Q, Machtay M, Rosenthal DI, Nguyen-Tan PF, Fortin A, et al. Institutional clinical trial accrual volume and survival of patients with head and neck cancer. *J Clin Oncol*. 2015;33:156-64.
 14. Boero IJ, Paravati AJ, Xu B, Cohen EE, Mell LK, Le QT, et al. Importance of radiation oncologist experience among patients with head-and-neck cancer treated with intensity-modulated radiation therapy. *J Clin Oncol*. 2016;34:684-90.
 15. Lee N, Xia P, Quivey JM, Sultanem K, Poon I, Akazawa C, et al. Intensity-modulated radiotherapy in the treatment of nasopharyngeal carcinoma: an update of the UCSF experience. *Int J Radiat Oncol Biol Phys*. 2002;53:12-22.
 16. Al-Sarraf M, LeBlanc M, Giri PG, Fu KK, Cooper J, Vuong T, et al. Chemoradiotherapy versus radiotherapy in patients with advanced nasopharyngeal cancer: phase III randomized Inter-group study 0099. *J Clin Oncol*. 1998;16:1310-7.
 17. Langendijk JA, Leemans CR, Buter J, Berkhof J, Slotman BJ. The additional value of chemotherapy to radiotherapy in locally advanced nasopharyngeal carcinoma: a meta-analysis of the published literature. *J Clin Oncol*. 2004;22:4604-12.