



Erratum: Figure Correction

Trends in Cardiovascular Complications and Mortality among Patients with Diabetes in South Korea

Jung Hwan Park¹, Kyoung Hwa Ha^{2,3}, Bo Yeon Kim⁴, Jae Hyuk Lee⁵, Dae Jung Kim^{2,3}

¹Division of Endocrinology and Metabolism, Department of Internal Medicine, Hanyang University College of Medicine, Seoul,
²Department of Endocrinology and Metabolism, ³Cardiovascular and Metabolic Disease Etiology Research Center, Ajou University School of Medicine, Suwon,
⁴Division of Endocrinology and Metabolism, Department of Internal Medicine, Soonchunhyang University Bucheon Hospital, Soonchunhyang University College of Medicine, Bucheon,
⁵Division of Endocrinology and Metabolism, Department of Internal Medicine, Myongji Hospital, Goyang, Korea

Diabetes Metab J 2021;45:120-124. <https://doi.org/10.4093/dmj.2020.0175>

An error was found in the following published article ‘Trends in cardiovascular complications and mortality among patients with diabetes in South Korea’ (*Diabetes Metab J* 2021;45(1):120-124). In brief report, there was a mistake in the legend for Fig. 2 published as an explanation of mortality rates among people with diabetes in South Korea in the period 2007 to 2015. A corrected version of Fig. 2 is attached.

Corrected Fig. 2.

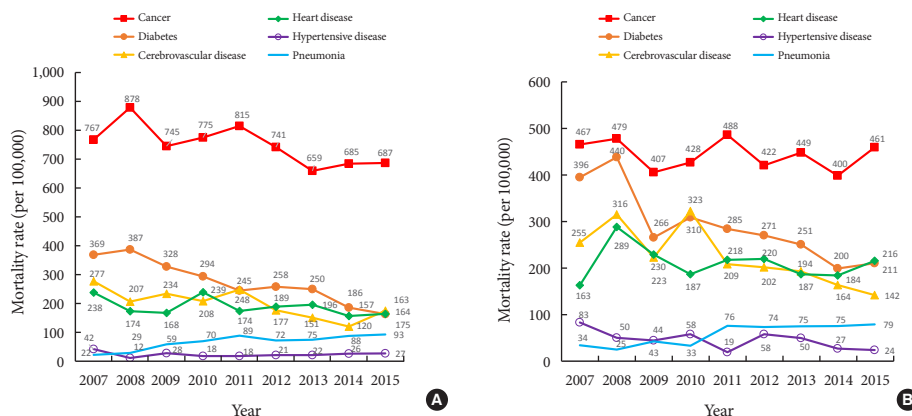


Fig. 2. Mortality rates among men (A) and women (B) with diabetes in South Korea (2007 to 2015).

This Fig. 2 has been corrected in the online version. We apologize for any inconvenience that this may have caused.

This is an Open Access article distributed under the terms of the Creative Commons Attribution Non-Commercial License (<https://creativecommons.org/licenses/by-nc/4.0/>) which permits unrestricted non-commercial use, distribution, and reproduction in any medium, provided the original work is properly cited.