



Effect of omalizumab as add-on therapy to Quality of Life Questionnaire for Korean Asthmatics (KAQLQ) in Korean patients with severe persistent allergic asthma

Jae-Woo Jung^{1,*}, Hae-Sim Park^{2,*}, Choon-Sik Park³, Sang-Heon Cho⁴, Inseon S. Choi⁵, Hee-Bom Moon⁶, Soon Seog Kwon⁷, Ho Joo Yoon⁸, Jung Won Park⁹, Jong-Myung Lee¹⁰, Dong-Chull Choi¹¹, and Byoung Whui Choi^{1,12}

¹Department of Internal Medicine, Chung-Ang University College of Medicine, Seoul; ²Department of Allergy and Clinical Immunology, Ajou University School of Medicine, Suwon; ³Department of Internal Medicine, Soonchunhyang University Bucheon Hospital, Bucheon; ⁴Department of Internal Medicine, Seoul National University College of Medicine, Seoul; ⁵Department of Internal Medicine, Chonnam National University Hospital, Gwangju; ⁶Department of Allergy and Clinical Immunology, Asan Medical Center, University of Ulsan College of Medicine, Seoul; ⁷Department of Internal Medicine, Bucheon St. Mary's Hospital, College of Medicine, The Catholic University of Korea, Bucheon; ⁸Department of Internal Medicine, Hanyang University College of Medicine, Seoul; ⁹Department of Internal Medicine, Yonsei University College of Medicine, Seoul; ¹⁰Department of Internal Medicine, School of Medicine, Kyungpook National University, Daegu; ¹¹Division of Allergy, Department of Medicine, Samsung Medical Center, Sungkyunkwan University School of Medicine, Seoul; ¹²Department of Internal Medicine, Chung-Ang University H.C.S. Hyundai Hospital, Namyangju, Korea

Korean J Intern Med 2021;36:1001-1013
https://doi.org/10.3904/kjim.2020.549

In the article cited above, there was an error in Figure 3B. A corrected version of Figure 3B is attached.

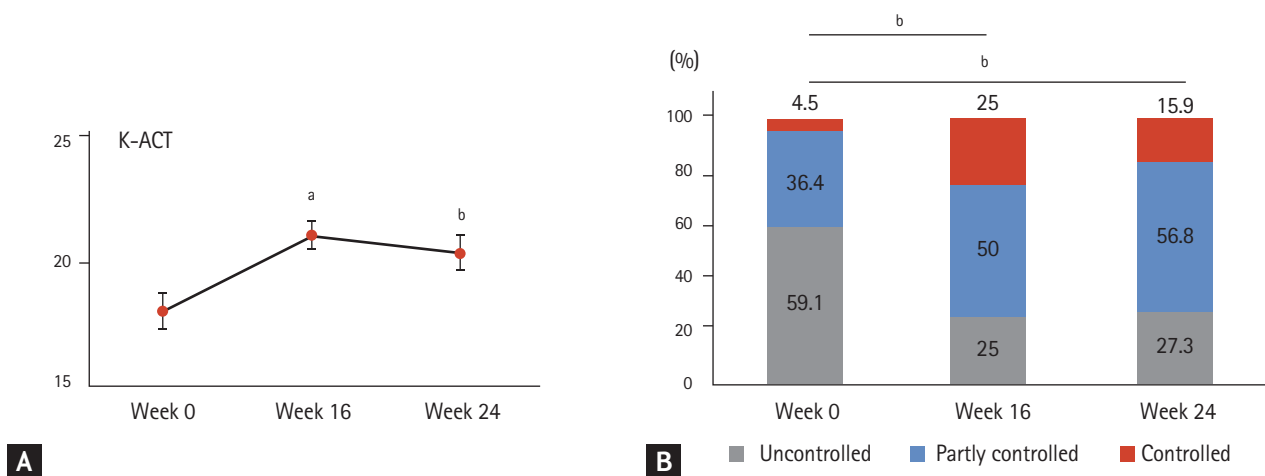


Figure 3. Korean asthma control test (K-ACT) at week 0, 16, and 24. (A) Mean \pm standard error of the mean K-ACT. (B) Asthma control levels. K-ACT was improved after omalizumab treatment, and the proportions of “partly controlled” and “controlled” on week 16 and week 24 were higher than those at week 0. ^a $p < 0.001$, ^b $p < 0.005$ compared to K-ACT at week 0.

We apologize for any inconvenience that this may have caused.