

RESEARCH

Open Access



Clinical feasibility of deep learning-based auto-segmentation of target volumes and organs-at-risk in breast cancer patients after breast-conserving surgery

Seung Yeun Chung^{1,2}, Jee Suk Chang^{1*}, Min Seo Choi¹, Yongjin Chang³, Byong Su Choi¹, Jaehee Chun¹, Ki Chang Keum¹, Jin Sung Kim^{1*} and Yong Bae Kim¹

Abstract

Background: In breast cancer patients receiving radiotherapy (RT), accurate target delineation and reduction of radiation doses to the nearby normal organs is important. However, manual clinical target volume (CTV) and organs-at-risk (OARs) segmentation for treatment planning increases physicians' workload and inter-physician variability considerably. In this study, we evaluated the potential benefits of deep learning-based auto-segmented contours by comparing them to manually delineated contours for breast cancer patients.

Methods: CTVs for bilateral breasts, regional lymph nodes, and OARs (including the heart, lungs, esophagus, spinal cord, and thyroid) were manually delineated on planning computed tomography scans of 111 breast cancer patients who received breast-conserving surgery. Subsequently, a two-stage convolutional neural network algorithm was used. Quantitative metrics, including the Dice similarity coefficient (DSC) and 95% Hausdorff distance, and qualitative scoring by two panels from 10 institutions were used for analysis. Inter-observer variability and delineation time were assessed; furthermore, dose-volume histograms and dosimetric parameters were also analyzed using another set of patient data.

Results: The correlation between the auto-segmented and manual contours was acceptable for OARs, with a mean DSC higher than 0.80 for all OARs. In addition, the CTVs showed favorable results, with mean DSCs higher than 0.70 for all breast and regional lymph node CTVs. Furthermore, qualitative subjective scoring showed that the results were acceptable for all CTVs and OARs, with a median score of at least 8 (possible range: 0–10) for (1) the differences between manual and auto-segmented contours and (2) the extent to which auto-segmentation would assist physicians in clinical practice. The differences in dosimetric parameters between the auto-segmented and manual contours were minimal.

Conclusions: The feasibility of deep learning-based auto-segmentation in breast RT planning was demonstrated. Although deep learning-based auto-segmentation cannot be a substitute for radiation oncologists, it is a useful tool with excellent potential in assisting radiation oncologists in the future.

*Correspondence: changjeesuk@yuhs.ac; jinsung@yuhs.ac

¹ Department of Radiation Oncology, Yonsei Cancer Center, Yonsei University College of Medicine, 50-1 Yonsei-ro, Seodaemun-gu, Seoul 03722, Korea

Full list of author information is available at the end of the article



© The Author(s) 2021. **Open Access** This article is licensed under a Creative Commons Attribution 4.0 International License, which permits use, sharing, adaptation, distribution and reproduction in any medium or format, as long as you give appropriate credit to the original author(s) and the source, provide a link to the Creative Commons licence, and indicate if changes were made. The images or other third party material in this article are included in the article's Creative Commons licence, unless indicated otherwise in a credit line to the material. If material is not included in the article's Creative Commons licence and your intended use is not permitted by statutory regulation or exceeds the permitted use, you will need to obtain permission directly from the copyright holder. To view a copy of this licence, visit <http://creativecommons.org/licenses/by/4.0/>. The Creative Commons Public Domain Dedication waiver (<http://creativecommons.org/publicdomain/zero/1.0/>) applies to the data made available in this article, unless otherwise stated in a credit line to the data.

Trial registration Retrospectively registered.

Keywords: Breast cancer, Auto-segmentation, Deep learning, Clinical target volume, Organs-at-risk

Background

Modern radiotherapy (RT) planning is a complex process that relies on computed tomography (CT)-based three-dimensional (3D) imaging as well as an expert team [1]. Based on CT simulations, radiation oncologists contour the relevant target volumes and surrounding normal structures and communicate with the dosimetrist the anticipated dosimetric goals that will deliver a therapeutic radiation dose to the target while sparing the organs-at-risk (OARs). In contrast to other primary malignancies such as lung and head & neck cancer, modern RT planning has not been commonly applied to breast cancer, in which conventional formulaic field-based planning and two-dimensional techniques have been predominantly used [2].

Recently, as the use of comprehensive regional node RT is increasingly being supported by multiple landmark trials [3–6], the complexity of the target volume has also increased, and international guidelines for regional node irradiation have been developed [7, 8]. Although RT for breast cancer patients is known for its low rates of acute and late toxicity [9–11], studies have demonstrated that incidental doses to the contralateral breast, esophagus, thyroid, and axillary-lateral thoracic vessel junction can affect patients' quality-of-life [12–14]. Furthermore, some studies have suggested that radiation-induced damage to the lung and heart can even offset the benefit of loco-regional breast cancer RT [15]. However, quality issues and inter-physician variations of target volumes and OAR contours have been of particular concern arising from dummy runs, multi-institutional studies, individual case reviews and audit studies [16–19]. Uncertainties regarding volume delineation and subsequent target and normal tissue doses may not only decrease the treatment efficacy but also increase the complication risk.

With recent advances in computing power, algorithms, and data collection, artificial intelligence (AI) is increasingly being used in healthcare to assist physicians. In radiation oncology, there are numerous areas in which AI is applicable, such as target and normal tissue segmentation, dose optimization, decision support systems, application of predictive models, and quality assurance [20–22]. Auto-contouring tools have been adopted by an increasing number of physicians and have resulted in improved efficiency, particularly for OARs in head

and neck cancer and target volume in prostate cancer [23, 24]. As there is a paucity of data regarding the auto-segmentation of target volumes and OARs in breast RT planning, we attempted to train a deep learning-based auto-segmentation model for target volumes and OARs for breast cancer and evaluated its clinical utility from a clinician's perspective.

Methods

Patients

The study was approved by the institutional review board of Severance hospital (IRB: 4–2019-0339). It included 111 breast cancer patients who received adjuvant RT after breast-conserving surgery (BCS). Both left-sided and right-sided breast cancer patients were included. The median age of the patients was 51 years (range 28–77 years), and the median body mass index was 22.5 kg/m² (range 17.03–35.4 kg/m²). For T stage, 15 patients were Tis (14%), 60 patients were T1 (54%), 33 patients were T2 (30%), and 3 patients were T3 (3%). For N stage, 82 patients were N0 (74%), 26 patients were N1 (23%), and 3 patients were N2 (3%). RT field included whole breast (WB) only for 79 patients (71%), whereas it included the WB with regional lymph nodes for 32 patients (29%). Both non-contrast (n=50) and contrast-enhanced (n=61) planning CT scans were used for manual delineation of CTVs and OARs. Planning CT scan (Somatom Sensation Open syngo CT 2009E, Siemens and Aquilion TSX-201A, Toshiba) was performed approximately two weeks prior to RT with a CT slice thickness of 3 mm. The setup position for all planning CT scans was the supine position with both arms held up using an arm support device (CIVICO). Contrast-enhanced planning CT was performed 1 min after administration of 80–90 mL intravenous contrast (iohexol, 84.11 g / 130 mL; depending on the patient's weight).

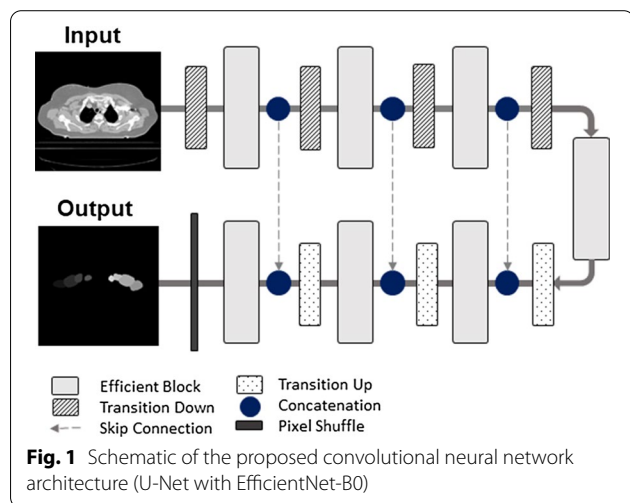
Delineation

Previous contours used for patient treatment were not used in this study. For homogeneity, a single expert who is ESTRO teaching course certified and treats approximately 550 breast cancer patients per year contoured the CTVs and OARs within 1 month, with the patients' clinical information blinded. The target volume consisted of CTVs of right and left breasts (CTV_{p_breast}); axillary

levels 1, 2, and 3 (CTVn_L1, L2, L3); internal mammary chain (CTVn_IMN); and lymph node level 4 (CTVn_L4), which is supraclavicular lymph node delineated according to the ESTRO guidelines [7]. In our study, we included interpectoral nodes mentioned in the ESTRO guidelines in CTVn_L2. In addition, the supraclavicular lymph nodes were additionally delineated according to the RTOG guidelines (CTVn_SCL RTOG) [25]. The OARs included the heart, right and left lungs, esophagus, spinal cord, and thyroid [26].

Deep learning-based auto-segmentation

To segment the CTVs and OARs, a 3D U-Net-like convolutional neural network (CNN) was used, which was based on U-Net structure [27], and combined with 3D version of EfficientNet-B0 as the backbone (Fig. 1) [28]. In the CNN, instead of using 2D operations as in U-Net and EfficientNet, their 3D counterparts are used to exploit the 3D structural information. For inputs of the CNN, all cases were resampled to a voxel spacing of $1.0 \times 1.0 \times 3.0$ mm³ and then the image intensity values of a truncated range of [-160, 240] were linearly normalized into the range of [0, 1]. Owing to GPU memory limitations, the CNN was trained in the patch level, specifically, input the 3D patch with a size of $128 \times 128 \times 64$ from the volumetric CT images and output the 3D patch of multi-label segmentation. Furthermore, we trained the CNN with the sum of cross-entropy and dice loss, and set the optimizer to be RMSprop with an initial learning rate of 5×10^{-4} . During training, in order to reduce overfitting and improve generalization, we employed regularization of weight decay of 10^{-4} [29], and data augmentation techniques such as scaling, flip, and rotation to all training patches.



Analysis

Among the 111 cases that were newly contoured by an expert, 92 cases were used as the training dataset, and 19 cases were used as test dataset #1 (contrast: 10 cases; non-contrast: 9 cases) for the analysis of the quantitative metrics. Test dataset #2 was prepared separately to analyze the efficacy of auto-segmented contours using real-world heterogeneous data. Dosimetric parameters were analyzed using different sets of CT scans with manual contours (previously used for patient treatment) delineated by various physicians and RT plans of breast cancer patients who received RT after surgery (n = 42).

Both quantitative metrics and qualitative scoring were used for analyzing test dataset #1. Quantitative metrics included the most commonly used geometrical indices, such as Dice similarity coefficient (DSC) and 95% Hausdorff distance (HD), to compare the auto-segmented and manually delineated contours. DSC is a measure of overlap between two contours, from “0” to “1,” where “1” indicates a complete overlap. HD is the measure of distance between two contours, where 0 mm indicates a complete overlap. For qualitative scoring, two panels—an expert breast cancer radiation oncologist panel (n = 11) and a non-expert panel that included residents and radiation oncologists whose specialty is not breast cancer (n = 15)—from 10 institutions answered the following questions after watching an example video on manual contouring and auto-segmentation contouring on a planning CT scan:

1. What score would you give for the differences between manually delineated contours and auto-segmentation contours? (*Difference scores*)
 - i. Answer: 0 (most different) to 10 (least different)
2. How much do you think auto-segmentation would assist you in real-world clinical practice? (*Assistance scores*)
 - i. Answer: 0 (not helpful) to 10 (very helpful)

To analyze test dataset #2, auto-segmented contours were generated in 42 patients’ CT scans, and dose-volume histograms were analyzed using both auto-segmented contours and original manual contours. Furthermore, dosimetric analysis was performed by comparing the mean dose (Gy), $D_{0.03cc}$ (Gy), and V_{5Gy} (cc) for heart; mean dose (Gy), V_{20Gy} (%), and V_{5Gy} (%) for ipsilateral lung; mean dose for contralateral lung; $D_{0.03cc}$ (Gy) for esophagus; and D_{1cc} (Gy) for spinal cord for the manual and auto-segmented contours.

Additionally, inter-user variability was assessed by analyzing the DSCs and HDs of contours delineated by three

different radiation oncologists on a randomly selected CT scan of a breast cancer patient. Furthermore, the contouring time was recorded for all three radiation oncologists to compare the time taken for manual delineation with that for auto-segmentation. These results for inter-user variability are included as Additional file 1.

Results

Quantitative metrics

Examples of deep learning-based auto-segmentation and manual contours are shown in Fig. 2 and as a video in Additional file 2. Table 1 compares the auto-segmented contours and manual contours for OARs and CTVs using

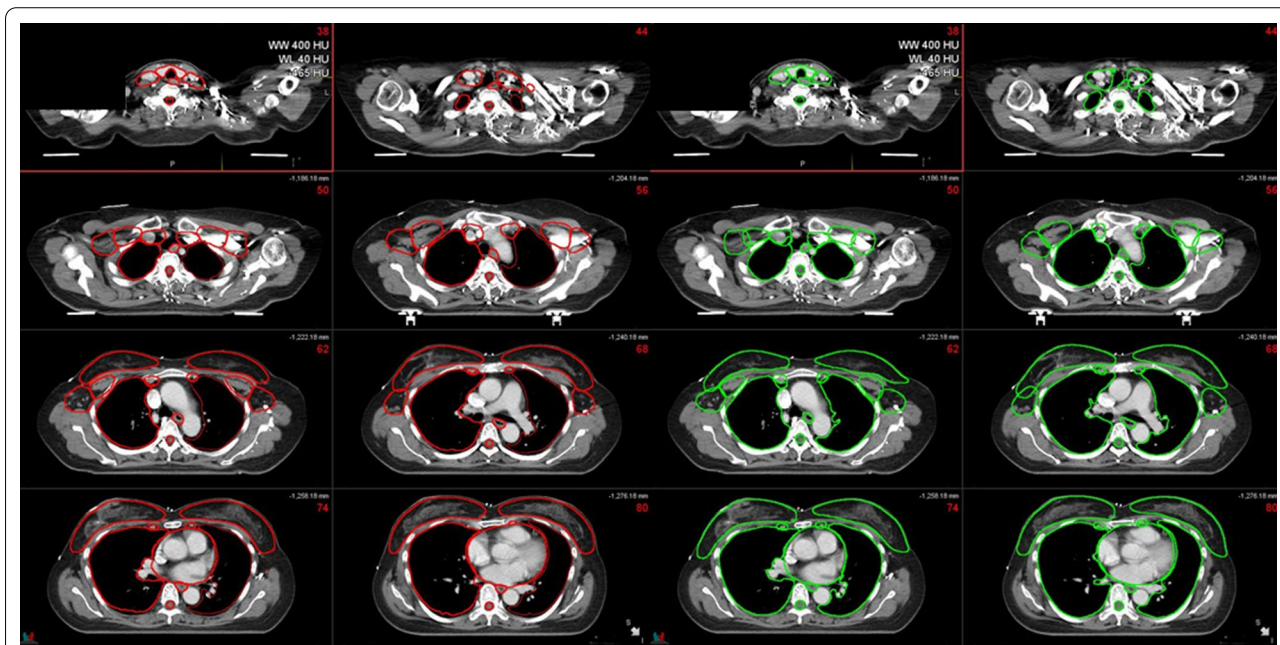


Fig. 2 Example of deep learning-based auto-segmentation (green) and manual (red) contours

Table 1 Comparison of deep learning auto-segmentation and manual contours of organs-at-risk and target volumes using test dataset #1

| | Total (n = 19) | | | | Contrast (n = 10) | | | | Non-contrast (n = 9) | | | |
|----------------|----------------|------|-------------|----------|-------------------|------|-------------|----------|----------------------|------|-------------|----------|
| | DSC | STD | 95% HD (mm) | STD (mm) | DSC | STD | 95% HD (mm) | STD (mm) | DSC | STD | 95% HD (mm) | STD (mm) |
| Organs-at-risk | | | | | | | | | | | | |
| Heart | 0.95 | 0.02 | 4.56 | 2.33 | 0.96 | 0.01 | 3.83 | 2.80 | 0.94 | 0.02 | 5.36 | 1.27 |
| Rt Lung | 0.98 | 0.01 | 3.61 | 2.15 | 0.98 | 0.00 | 4.64 | 2.46 | 0.97 | 0.01 | 2.46 | 0.69 |
| Lt Lung | 0.97 | 0.01 | 2.82 | 0.71 | 0.97 | 0.01 | 3.04 | 0.76 | 0.97 | 0.02 | 2.59 | 0.55 |
| Thyroid | 0.89 | 0.05 | 1.88 | 0.90 | 0.90 | 0.04 | 1.55 | 0.65 | 0.88 | 0.05 | 2.25 | 0.99 |
| Esophagus | 0.84 | 0.06 | 2.87 | 1.49 | 0.85 | 0.05 | 2.47 | 0.91 | 0.83 | 0.07 | 3.31 | 1.85 |
| Spinal cord | 0.82 | 0.10 | 2.98 | 3.10 | 0.87 | 0.07 | 1.58 | 0.74 | 0.76 | 0.10 | 4.54 | 3.89 |
| Target | | | | | | | | | | | | |
| CTVp_breast | 0.94 | 0.04 | 5.50 | 3.17 | 0.94 | 0.04 | 5.13 | 2.74 | 0.94 | 0.04 | 5.91 | 3.55 |
| CTVn_L1 | 0.74 | 0.08 | 10.93 | 6.27 | 0.71 | 0.09 | 13.51 | 7.10 | 0.78 | 0.05 | 8.07 | 3.40 |
| CTVn_L2 | 0.80 | 0.07 | 6.36 | 2.52 | 0.79 | 0.07 | 6.71 | 2.40 | 0.81 | 0.06 | 5.98 | 2.60 |
| CTVn_L3 | 0.64 | 0.13 | 7.99 | 3.81 | 0.66 | 0.10 | 6.97 | 2.87 | 0.62 | 0.16 | 9.11 | 4.37 |
| CTVn_IMN | 0.72 | 0.09 | 5.75 | 3.36 | 0.67 | 0.09 | 7.53 | 3.71 | 0.77 | 0.07 | 3.77 | 1.00 |
| CTVn_L4 | 0.74 | 0.12 | 6.04 | 6.12 | 0.67 | 0.12 | 8.37 | 7.61 | 0.80 | 0.09 | 3.45 | 1.41 |
| CTVn_SCL RTOG | 0.78 | 0.08 | 6.95 | 2.89 | 0.76 | 0.08 | 7.85 | 3.20 | 0.80 | 0.08 | 5.95 | 2.09 |

mean DSC and 95% HD. With regard to OARs, the mean DSCs were above 0.80, and mean 95% HDs were below 5 mm, which are acceptable results. For CTV, the correlation between the auto-segmented and manual contours was excellent for the breast, with a mean DSC higher than 0.90. As for other CTVs, including CTVn_L1, L2, L3, CTVn_IMN, CTVn_L4, and CTVn_SCL RTOG, the mean DSCs were mostly higher than 0.70. The mean 95% HD ranged from 5.50 to 10.93 mm for CTVs. The mean DSCs and 95% HDs did not show a large difference between the contrast-enhanced CT test datasets and non-contrast CT test datasets.

Dosimetric analysis

Figures 3a and b show dose-volume histograms with average dosimetric values for patients who received WB RT only or that with regional node irradiation, respectively. The increase at the end for the ipsilateral breast contour line in the dose-volume histograms is due to the initial RT plan that included a simultaneous integrated boost for the tumor bed. As shown in Fig. 3a, most manual and auto-segmented contours were similar, except for a minor difference for the spinal cord. The difference in the delineated spinal cord volume (average absolute difference of 7.24 ± 9.07 cc) may have affected the results. Figure 3b shows that there was a considerable difference in the coverage for regional nodal contours such as axillary lymph node levels 1, 2, 3, and IMN.

In addition, various dosimetric parameters for OARs—such as heart, lung, esophagus, and spinal cord—were analyzed, as shown in Table 2. The mean absolute differences for all parameters were minimal, showing the efficacy of auto-segmented contours.

Qualitative scoring

To confirm whether deep learning-based auto-segmentation can practically serve as a useful tool in clinical practice, qualitative scores were also analyzed. Qualitative scoring was performed by both an expert ($n=11$) and a non-expert panel ($n=15$) for difference and assistance scores, as shown in Fig. 4. For OARs, the median difference score was 9 (range 8–10), and the median assistance score was 9 (range 8–10), in the case of the expert panel. The scores were similar for OARs in the case of the non-expert panel, with a median difference score of 8 (range 6–10) and a median assistance score of 9 (range 8–10). For the CTVs of breasts and regional lymph nodes, the median difference score was 8 (range 7–9), and the median assistance score was 9 (range 7–10), in the case of the expert panel. With regard to the non-expert panel, the median difference score was 8 (range 6–10), and the median assistance score was 9 (range 5–10).

Analyses for inter-observer variability and contouring time are included in Additional file 1.

Discussion

In this study, we trained a deep learning-based framework to segment 14 CTVs and six OARs in simulation CT images for breast cancer RT. Our findings suggest that the proposed algorithm performed well, exhibiting good agreement with the CTVs and OARs that were manually contoured by clinical experts from both qualitative and quantitative aspects. The dosimetric implications of the auto-contours were also evaluated, and we did not observe any significant difference in dose-volume histograms between the auto-segmented contours and manual contours.

Although AI solutions are best suited to situations in radiology where ground truths are clear, the concept of a ground truth in RT fields is disputable because RT is both a science and an art entailing clinical input and creativity [30]. More specifically, inter-physician variations are present even in contours delineated by board-certified radiation oncologists from the same institution (e.g., variations in the nodal target volumes in our study; Additional file 1). We acknowledge that the generation of the same contours by an AI algorithm under multiple scenarios does not mean that the generated contours are optimal. Considering this, we collected data based on the assumption that the international guidelines are an alternative ground truth [7, 8]. Although the proposed algorithm performed well, a risk exists that its reliability may decrease in some situations [31].

In 2006, Eldesoky et al. first reported the clinical utility of atlas-based auto-segmentation (ABAS) in loco-regional RT for breast cancer using the data of 60 patients, where delineation was performed according to the ESTRO consensus guideline [32]. ABAS showed good agreement in some volumes (e.g., lung, heart, and breast), whereas it showed only modest agreement in other structures or in external datasets. However, research interest shifted to deep learning-based auto-segmentation because ABAS had several limitations; thus, we recently published a study comparing the performance of deep learning-based auto-segmentation with that of two commercially available ABAS systems for breast cancer RT [33]. In this study, the deep learning-based approach showed more consistent and robust performance than ABAS for most structures, and this performance gap increased substantially for soft-tissue-based regions and smaller volumes.

Deep learning-based auto-segmentation has been widely investigated in head & neck, lung, and prostate cancers and has demonstrated clinically relevant impact with regard to saving time and mitigating inter-observer

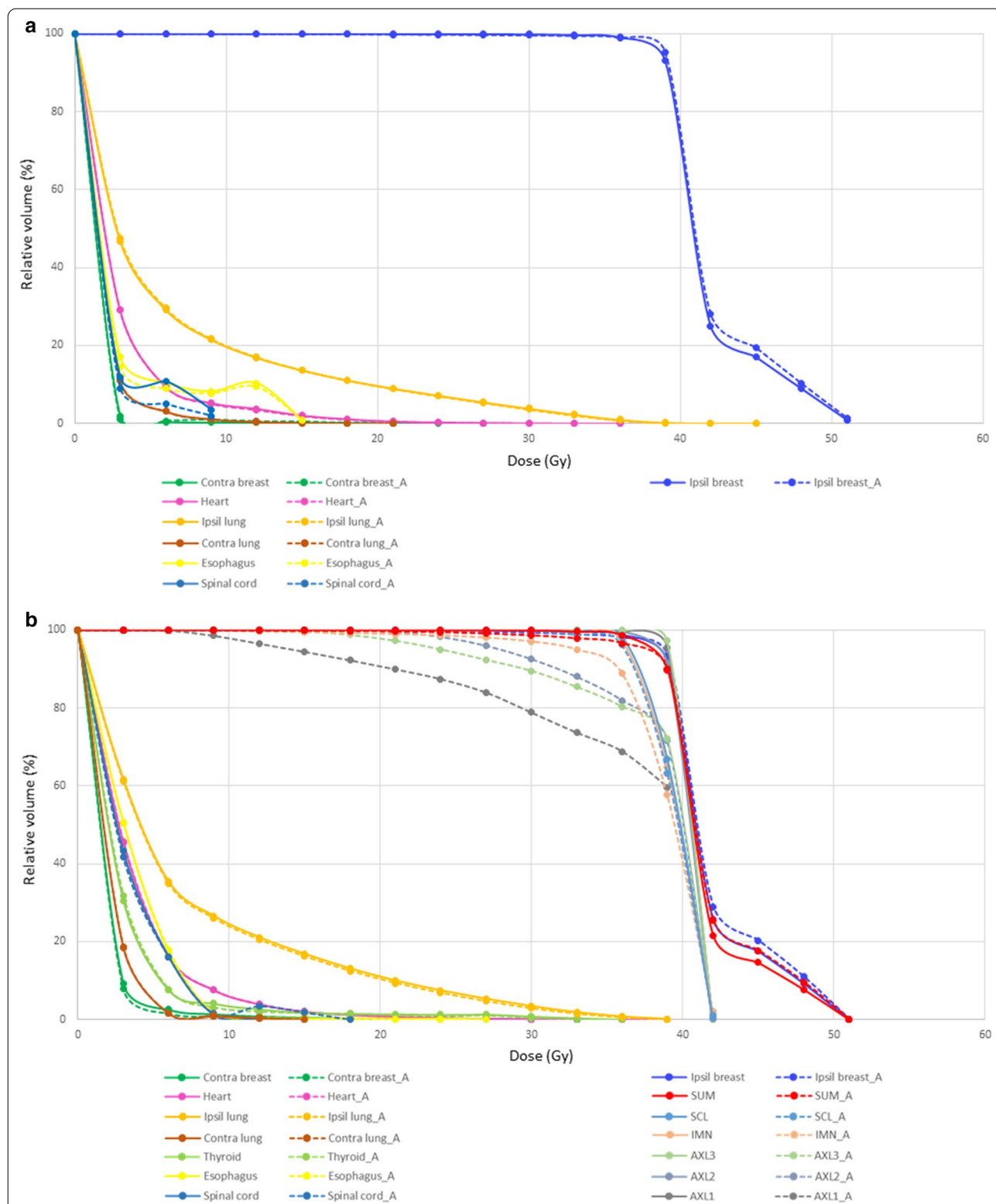


Fig. 3 Comparison of dose-volume histograms with average dosimetric values of manual contours (solid line) and auto-segmentation contours (dotted line) for patients who received whole breast RT only (a) or that with regional node irradiation (b). (Abbreviations: SCL, supraclavicular lymph nodes; IMN, internal mammary lymph nodes; AXL3, axillary lymph node level 3; AXL2, axillary lymph node level 2; AXL1, axillary lymph node level 1)

Table 2 Dosimetric outcomes for manual and auto-segmented contours for test dataset #2 (n = 42)

| | Manual Mean | STD | Autocontour Mean | STD | Absolute difference Mean | STD |
|--|----------------|-------|---------------------|-------|-----------------------------|------|
| Heart | | | | | | |
| Mean (Gy) | 3.27 | 1.10 | 3.26 | 1.10 | 0.08 | 0.07 |
| D _{0.03cc} (Gy) | 22.72 | 10.24 | 21.75 | 9.68 | 1.51 | 1.76 |
| V _{5Gy} (cc) | 16.08 | 10.23 | 16.13 | 10.39 | 0.73 | 0.75 |
| Lung | | | | | | |
| Ipsilateral lung mean (Gy) | 6.87 | 0.97 | 6.82 | 0.97 | 0.11 | 0.18 |
| Ipsilateral lung V _{20Gy} (%) | 10.08 | 2.59 | 9.82 | 2.68 | 0.36 | 0.35 |
| Ipsilateral lung V _{5Gy} (%) | 35.25 | 5.15 | 35.46 | 5.32 | 0.67 | 0.98 |
| Contralateral lung mean (Gy) | 1.83 | 0.66 | 1.84 | 0.67 | 0.02 | 0.03 |
| Esophagus | | | | | | |
| D _{0.03cc} (Gy) | 7.82 | 5.16 | 7.56 | 4.73 | 0.85 | 1.61 |
| Spinal cord | | | | | | |
| D _{1cc} (Gy) | 4.38 | 2.69 | 4.37 | 2.96 | 0.43 | 1.08 |

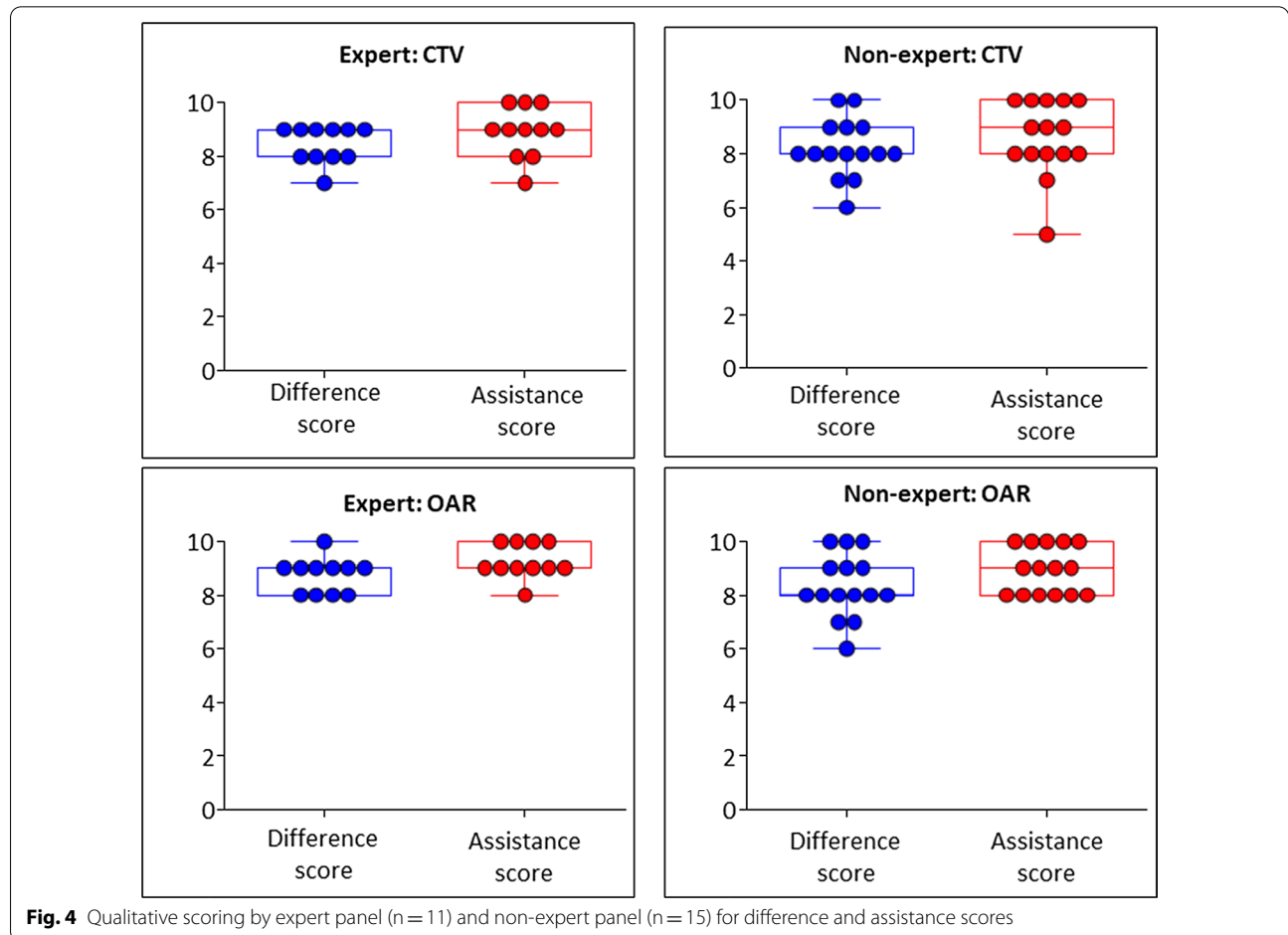


Fig. 4 Qualitative scoring by expert panel (n = 11) and non-expert panel (n = 15) for difference and assistance scores

variability [23, 24, 34]. Although several studies have reported the feasibility of the deep learning-based approach for the breast, training and testing has only been performed for ipsilateral breast CTVs [35, 36]. In this study, a satisfactory DSC of 0.94 for CTVp_breast was shown, which is similar to that obtained for other series using the deep learning-based approach. One study using a dataset of 800 patients with a deep learning algorithm (DD-ResNet) showed a mean DSC of 0.91 for the CTVs of both breasts [35]. Furthermore, similar to the study by Eldesoky et al. [32], in which they tested ABAS, we performed training not only for WB CTVs but also for various OARs and other CTVs, including regional lymph nodes in breast cancer patients. The current deep learning-based auto-segmentation model showed higher performance in segmenting various OARs—including heart, lung, thyroid, esophagus, and spinal cord—that were fairly large and well-defined. As for regional lymph nodes, because of the smaller volumes and less well-defined borders, the current model exhibited modest performance. Regarding qualitative scoring, the expert and non-expert panels gave high difference and assistance scores for both the OARs and CTVs.

To date, even with fully validated auto-segmentations, modification or correction by clinical experts is commonly accepted. However, whether modification or correction is essential when auto-contours are utilized for dosimetric analysis has not been well studied. In this study, dosimetric analysis showed that there was a good agreement in dose distribution between manual and auto-segmented contours for OARs. However, as for CTVs, particularly for the axillary lymph node regions and IMN, there were some discrepancies between manual and auto-segmented contours. For OARs, the use of auto-segmented contours for dose-response related studies or for predicting in-clinic normal tissue complication probabilities could be proposed. However, for CTVs, it is apparent that auto-contours in target volumes require significant modification by experts to conform to the corresponding anatomy and to individualize according to tumor and patient information. In the research field, auto-segmented CTVs could be used as a reference point while comparing the target volume delineation of various participants.

In breast cancer trials, variations in target delineation and RT planning have become a prominent issue, particularly in multidisciplinary trials that lack RT quality assurance programs [37]. In a recent audit study across a large network, it was found that nodes were not contoured or the contour quality was inadequate for 18% of patients [38]. In a Korean study that investigated inter-institutional variations in breast intensity-modulated RT (KROG 19-01), there were large heterogeneities in the

target volume as well as OARs, producing large variations in mean heart dose and lung V_{20Gy} (up to five times in the same dummy run case). We believe that our auto-segmented contours of CTVs and OARs can play an important role in the breast RT quality assurance process, as illustrated by Chen et al. [36]. Nationwide quality assurance is underway in Korea with our proposed algorithm.

Accurate delineation of all OARs and CTVs is a laborious task; here, auto-segmentation can serve as a useful tool in reducing the workload of physicians. In a previous study on ABAS for loco-regional RT of breast cancer, it was found that ABAS reduced the time required for manual segmentation before correction by 93% and after correction by 32% [32]. This study showed a similar potential, with average times of 39 min and 10 min for manual delineation and deep learning-based auto-segmentation, respectively (Additional file 1). With the assistance of deep learning-based auto-segmentation, radiation oncologists will be able to work more efficiently. Qualitative subjective scoring by the expert and non-expert panels exhibited satisfactory results for both difference and assistance scores, showing that deep learning-based auto-segmentation can serve as a helpful tool in real-world clinics.

This study has several limitations. First, the manual contours used as reference were delineated by a single expert radiation oncologist, which can be considered both as a strength and a limitation. As a single expert delineated all contours, we were able to train the deep learning-based model sufficiently with homogenous data involving fewer patients compared to other studies. However, in the real world, inter-observer variations exist, and there is no 100% gold standard. Thus, we plan to conduct further studies using contours from multiple experts for generalization. However, in a study comparing deep learning-based auto-segmentation of OARs and CTVs based on expert inter-observer variability in RT planning, the accuracy of deep learning-based auto-segmented contours trained using data derived from a single expert was comparable to that of the contours obtained using data with inter-observer variability, thereby showing that the results of the current study with the contours of a single expert radiation oncologist are still meaningful [39].

The second limitation of our study is the number of patients analyzed. However, as mentioned earlier, the DSC for CTVp_breast was better in our study compared to that in other studies. Furthermore, quantitative metrics were not analyzed for test dataset #2 owing to the heterogeneity of the initial contour volumes. Another limitation of our study would be that the position of the patients during CT simulation and treatment may vary among institutions. In addition, different clinical situations, such as post-mastectomy status and reconstructed

status, exist for breast cancer patients. In the near future, we plan to validate our deep learning model with data from other institutions. Even with the current results, we are efficiently using auto-segmentation in the clinic by directly sending the CT simulation images to the server after simulation, and the physician uses the auto-segmented contours for RT planning afterwards. However, further research with a larger number of patients is required. Currently, we are engaged in a national multi-center study aimed at validating the results presented herein and leveraging AI techniques to improve the quality of intensity-modulated RT for breast cancer patients (KROG 21–01).

Additionally, it would have been more favorable if coronary vessels were included as an OAR. The importance of cardiac substructures, such as coronary vessels, is being increasingly acknowledged [40]. Currently, the development of a separate deep learning-based auto-segmentation model focused on cardiac substructures, including the right atrium, right ventricle, left atrium, left ventricle, right coronary artery, and left anterior descending artery, is underway.

Conclusions

This study demonstrated the potential and feasibility of deep learning-based auto-segmentation for breast cancer patients who are receiving RT after BCS. Although deep learning-based auto-segmentation cannot serve as a substitute for the experience of radiation oncologists, it has the potential to serve as a useful tool in assisting them.

Supplementary Information

The online version contains supplementary material available at <https://doi.org/10.1186/s13014-021-01771-z>.

Additional file 1. Inter-observer variability and contouring time of three radiation oncologists for manual contours of organs-at-risk and target volumes.

Additional file 2. Example video of deep learning-based auto-segmentation and manual contours.

Abbreviations

RT: radiotherapy; CT: computed tomography; CTV: clinical target volume; OARs: organs-at-risk; AI: artificial intelligence; BCS: breast-conserving surgery; CNN: convolutional neural network; DSC: dice similarity coefficient; HD: hausdorff distance; ABAS: atlas-based auto-segmentation.

Acknowledgements

None.

Authors' contributions

SYC, JSC, JSK, KCK, YBK made contributions to the conception and design of the work; SYC, JSC, JSK made contributions to the acquisition of data and analysis; SYC, JSC, MSC, YC, BSC, JC made contributions to the interpretation of data; SYC, JSC, JSK drafted the work or substantially revised it. All authors read and approved the final manuscript and have agreed both to be personally accountable for the author's own contributions and to ensure that questions related to the accuracy or integrity of any part of the work, even ones in

which the author was not personally involved, are appropriately investigated, resolved, and the resolution documented in the literature. All authors read and approved the final manuscript.

Funding

This work was supported by the National Research Foundation of Korea (NRF) grant funded by the Korea government (MSIT) (No. 2019R1C1C1009359).

Availability of data and materials

The research data are stored in an institutional repository and will be shared upon reasonable request to the corresponding author.

Ethics approval and consent to participate

This study was approved by the institutional review board of Severance Hospital of the Yonsei University Health System (IRB: 4–2019-0339). Consent was waived due to the retrospective nature of the study.

Consent for publication

Not applicable.

Competing interests

Dr. Chang reports grants from National Research Foundation of Korea (NRF) while the study was being conducted. In addition, Dr. Chang has a patented prediction method for normal tissue region prediction, with royalties paid from OncoSoft, Coreline Soft Co., Ltd., and reports being an OncoSoft Company Shareholder. Dr. Chang YJ reports being an Employee of Coreline Soft Co., Ltd. Dr. Kim JS reports a patented prediction method for normal tissue region prediction, with royalties paid from OncoSoft, Coreline Soft Co., Ltd., and being the OncoSoft Company CEO. Dr. Kim YB reports a patented prediction method for normal tissue region prediction, with royalties paid from OncoSoft, Coreline Soft Co., Ltd., and being an OncoSoft Company Shareholder.

Author details

¹ Department of Radiation Oncology, Yonsei Cancer Center, Yonsei University College of Medicine, 50-1 Yonsei-ro, Seodaemun-gu, Seoul 03722, Korea. ² Department of Radiation Oncology, Ajou University School of Medicine, Suwon, Korea. ³ CorelineSoft, Co, Ltd, Seoul, Korea.

Received: 23 December 2020 Accepted: 11 February 2021

Published online: 25 February 2021

References

- Gardner SJ, Kim J, Chetty IJ. Modern radiation therapy planning and delivery. *Hematology/Oncology Clinics*. 2019;33:947–62.
- Joosten A, Matzinger O, Jeanneret-Sozzi W, Bochud F, Moeckli R. Evaluation of organ-specific peripheral doses after 2-dimensional, 3-dimensional and hybrid intensity modulated radiation therapy for breast cancer based on Monte Carlo and convolution/superposition algorithms: implications for secondary cancer risk assessment. *Radiother Oncol*. 2013;106:33–41.
- Donker M, van Tienhoven G, Straver ME, Meijnen P, van de Velde CJ, Mansel RE, et al. Radiotherapy or surgery of the axilla after a positive sentinel node in breast cancer (EORTC 10981–22023 AMAROS): a randomised, multicentre, open-label, phase 3 non-inferiority trial. *Lancet Oncol*. 2014;15:1303–10.
- Thorsen LBJ, Offersen BV, Danø H, Berg M, Jensen I, Pedersen AN, et al. DBCG-IMN: a population-based cohort study on the effect of internal mammary node irradiation in early node-positive breast cancer. *J Clin Oncol*. 2016;34:314–20.
- Poortmans PM, Weltens C, Fortpied C, Kirkove C, Peignaux-Casasnovas K, Budach V, et al. Internal mammary and medial supraclavicular lymph node chain irradiation in stage I-III breast cancer (EORTC 22922/10925): 15-year results of a randomised, phase 3 trial. *Lancet Oncol*. 2020;21:1602–10.
- Whelan TJ, Olivetto IA, Parulekar WR, Ackerman I, Chua BH, Nabid A, et al. Regional nodal irradiation in early-stage breast cancer. *N Engl J Med*. 2015;373:307–16.

7. Offeresen BV, Boersma LJ, Kirkove C, Hol S, Aznar MC, Sola AB, et al. ESTRO consensus guideline on target volume delineation for elective radiation therapy of early stage breast cancer. *Radiother Oncol*. 2015;114:3–10.
8. Gentile MS, Usman AA, Neuschler EI, Sathiaselan V, Hayes JP, Small Jr W. Contouring guidelines for the axillary lymph nodes for the delivery of radiation therapy in breast cancer: evaluation of the RTOG breast cancer atlas. *Int J Radiat Oncol* Biol* Phys*. 2015;93:257–65.
9. Lancellotta V, Chierchini S, Perrucci E, Saldi S, Falcinelli L, Iacco M, et al. Skin toxicity after chest wall/breast plus level III-IV lymph nodes treatment with helical tomotherapy. *Cancer Invest*. 2018;36:504–11.
10. Lancellotta V, Iacco M, Perrucci E, Falcinelli L, Zucchetti C, de Bari B, et al. Comparing four radiotherapy techniques for treating the chest wall plus levels III-IV draining nodes after breast reconstruction. *Br J Radiol*. 2018;91:20160874.
11. Palumbo I, Mariucci C, Falcinelli L, Perrucci E, Lancellotta V, Podlesko AM, et al. Hypofractionated whole breast radiotherapy with or without hypofractionated boost in early stage breast cancer patients: a mono-institutional analysis of skin and subcutaneous toxicity. *Breast Cancer*. 2019;26:290–304.
12. Gross JP, Lynch CM, Flores AM, Jordan SW, Helenowski IB, Gopalakrishnan M, et al. Determining the organ at risk for lymphedema after regional nodal irradiation in breast cancer. *Int J Radiat Oncol* Biol* Phys*. 2019;105:649–58.
13. Yaney A, Ayan AS, Pan X, Jhawar S, Healy E, Beyer S, et al. Dosimetric parameters associated with radiation-induced esophagitis in breast cancer patients undergoing regional nodal irradiation. *Radiother Oncol*. 2020;155:167–73.
14. Stovall M, Smith SA, Langholz BM, Boice Jr JD, Shore RE, Andersson M, et al. Dose to the contralateral breast from radiotherapy and risk of second primary breast cancer in the WECARE study. *Int J Radiat Oncol* Biol* Phys*. 2008;72:1021–30.
15. Taylor C, Correa C, Duane FK, Aznar MC, Anderson SJ, Bergh J, et al. Estimating the risks of breast cancer radiotherapy: evidence from modern radiation doses to the lungs and heart and from previous randomized trials. *J Clin Oncol*. 2017;35:1641.
16. Poortmans P, Kouloulis V, Venselaar J, Struikmans H, Davis J, Huyskens D, et al. Quality assurance of EORTC trial 22922/10925 investigating the role of internal mammary—medial supraclavicular irradiation in stage I-III breast cancer: the individual case review. *Eur J Cancer*. 2003;39:2035–42.
17. Chung Y, Kim JW, Shin KH, Kim SS, Ahn S-J, Park W, et al. Dummy run of quality assurance program in a phase 3 randomized trial investigating the role of internal mammary lymph node irradiation in breast cancer patients: Korean Radiation Oncology Group 08–06 study. *Int J Radiat Oncol* Biol* Phys*. 2015;91:419–26.
18. Ling DC, Moppins BL, Champ CE, Gorantla VC, Beriwal S. Quality of regional nodal irradiation plans in breast cancer patients across a large network—can we translate results from randomized trials into the clinic? *Pract Radiat Oncol*. 2020.
19. Ciardo D, Argenone A, Boboc GI, Cucciarelli F, De Rose F, De Santis MC, et al. Variability in axillary lymph node delineation for breast cancer radiotherapy in presence of guidelines on a multi-institutional platform. *Acta Oncol*. 2017;56:1081–8.
20. Francolini G, Desideri I, Stocchi G, Salvestrini V, Ciccone LP, Garlatti P, et al. Artificial Intelligence in radiotherapy: state of the art and future directions. *Med Oncol (Northwood, London, England)*. 2020;37:50.
21. Oktay O, Nanavati J, Schwaighofer A, Carter D, Bristow M, Tanno R, et al. Evaluation of deep learning to augment image-guided radiotherapy for head and neck and prostate cancers. *JAMA Netw Open*. 2020;3:e2027426.
22. Fionda B, Boldrini L, D'Aviero A, Lancellotta V, Gambacorta MA, Kovács G, et al. Artificial intelligence (AI) and interventional radiotherapy (brachytherapy): state of art and future perspectives. *J Contemp Brachytherapy*. 2020;12:497–500.
23. Kiljunen T, Akram S, Niemelä J, Löyttyniemi E, Seppälä J, Heikkilä J, et al. A deep learning-based automated CT segmentation of prostate cancer anatomy for radiation therapy planning-A retrospective multicenter study. *Diagnostics*. 2020;10:959.
24. Brunenberg EJ, Steineseifer IK, van den Bosch S, Kaanders JH, Brouwer CL, Gooding MJ, et al. External validation of deep learning-based contouring of head and neck organs at risk. *Phys Imag Radiat Oncol*. 2020;15:8–15.
25. White J, Arthur D, Buchholz T, MacDonald S, Marks L, Pierce L, et al. Radiation Therapy oncology group breast cancer contouring Atlas2016.
26. Mir R, Kelly SM, Xiao Y, Moore A, Clark CH, Clementel E, et al. Organ at risk delineation for radiation therapy clinical trials: Global Harmonization Group consensus guidelines. *Radiotherapy and Oncology*. 2020.
27. Ronneberger O, Fischer P, Brox T. U-net: Convolutional networks for biomedical image segmentation. In: International conference on medical image computing and computer-assisted intervention, 2015; 234–241.
28. Tan M, Le QV. Efficientnet: Rethinking model scaling for convolutional neural networks. *arXiv preprint <https://arxiv.org/abs/1905.11946>*. 2019.
29. Milletari F, Navab N, Ahmadi SA. V-net: Fully convolutional neural networks for volumetric medical image segmentation. In: 2016 fourth international conference on 3D vision (3DV). 2016; 565–571.
30. Bridge P, Bridge R. Artificial intelligence in radiotherapy: a philosophical perspective. *J Med Imaging Radiat Sci*. 2019;50:S27-s31.
31. Wong J, Fong A, McVicar N, Smith S, Giambattista J, Wells D, et al. Comparing deep learning-based auto-segmentation of organs at risk and clinical target volumes to expert inter-observer variability in radiotherapy planning. *Radiother Oncol*. 2020a;144:152–8.
32. Eldesoky AR, Yates ES, Nyeng TB, Thomsen MS, Nielsen HM, Poortmans P, et al. Internal and external validation of an ESTRO delineation guideline - dependent automated segmentation tool for loco-regional radiation therapy of early breast cancer. *Radiother Oncol*. 2016;121:424–30.
33. Choi MS, Choi BS, Chung SY, Kim N, Chun J, Kim YB, et al. Clinical evaluation of atlas-and deep learning-based automatic segmentation of multiple organs and clinical target volumes for breast cancer. *Radiotherapy Oncol*. 2020.
34. Poortmans PM, Takanen S, Marta GN, Meattini I, Kaidar-Person O. Winter is over: the use of artificial intelligence to individualise radiation therapy for breast cancer. *The Breast*. 2020;49:194–200.
35. Men K, Zhang T, Chen X, Chen B, Tang Y, Wang S, et al. Fully automatic and robust segmentation of the clinical target volume for radiotherapy of breast cancer using big data and deep learning. *Phys Med*. 2018;50:13–9.
36. Chen X, Men K, Chen B, Tang Y, Zhang T, Wang S, et al. CNN-based quality assurance for automatic segmentation of breast cancer in radiotherapy. *Front Oncol*. 2020;10:524.
37. Peters LJ, O'Sullivan B, Giral J, Fitzgerald TJ, Trotti A, Bernier J, et al. Critical impact of radiotherapy protocol compliance and quality in the treatment of advanced head and neck cancer: results from TROG 02.02. *J Clin Oncol*. 2010;28:2996–3001.
38. Ling DC, Moppins BL, Champ CE, Gorantla VC, Beriwal S. Quality of regional nodal irradiation plans in breast cancer patients across a large network-can we translate results from randomized trials into the clinic? *Pract Radiat Oncol*. 2020.
39. Wong J, Fong A, McVicar N, Smith S, Giambattista J, Wells D, et al. Comparing deep learning-based auto-segmentation of organs at risk and clinical target volumes to expert inter-observer variability in radiotherapy planning. *Radiother Oncol*. 2020b;144:152–8.
40. Nilsson G, Holmberg L, Garmo H, Duvernoy O, Sjögren I, Lagerqvist B, et al. Distribution of coronary artery stenosis after radiation for breast cancer. *J Clin Oncol*. 2012;30:380–6.

Publisher's Note

Springer Nature remains neutral with regard to jurisdictional claims in published maps and institutional affiliations.